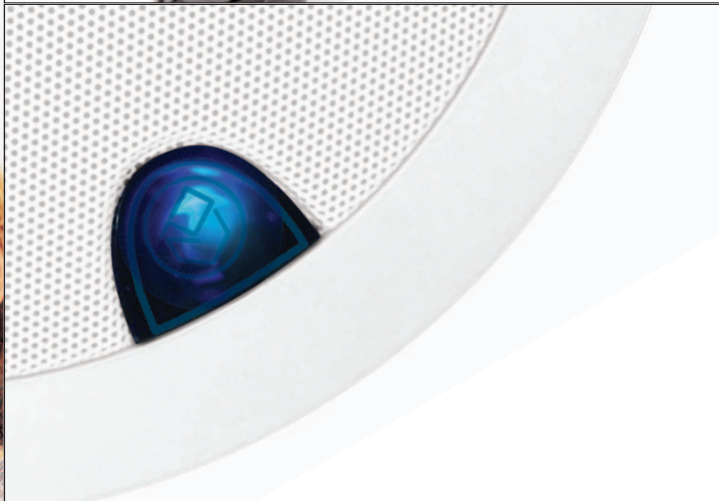


A built-in multi-room entertainment system offering elegance, simplicity and superb high fidelity performance...



...in any room in your home at the touch of a button.

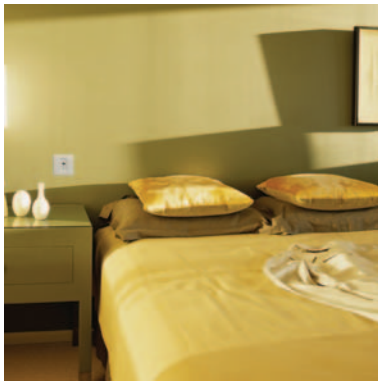


the least intrusive entertainment system ever devised

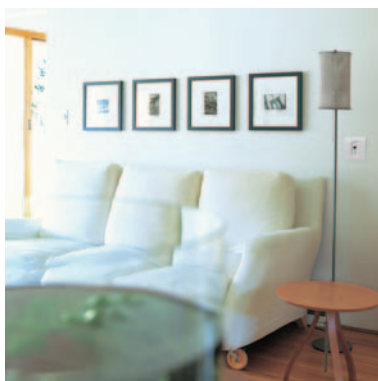


This is the way home entertainment should be, listening to your favourite music or enjoying a movie in any room you choose.

The great thing is, all of this is achieved in a very discreet and space efficient way – no need for big unsightly black boxes, Systemline Modular is a built-in solution. It couldn't be easier. Just plug-in your hi-fi or home theatre system and go! It's as simple as that.



Best of all, Systemline delivers all of this in unparalleled high fidelity sound thanks to its unique purpose-designed, amplified in-ceiling loudspeakers.



Using Systemline Modular is so simple, just press a button on the wall keypad or remote control... and enjoy!

## What is Multi-Room Entertainment?

Multi-Room Entertainment represents a built-in system within the home which allows the whole family the freedom to enjoy home entertainment independently in any number of chosen rooms.

## Why choose Systemline Modular?



Modular uses reliable proven technology from Europe's leading manufacturer – with over 20 years experience and 1000's of systems fitted in discerning homes across Europe. Relax, you're in good company.

Modular offers true high fidelity performance.

Easy to use remote controls and keypads – at last a system that can be enjoyed by all the family.

Power efficient design – a typical 6 room system with all rooms playing uses less power than a 100 watt light bulb!

Modular by name modular by nature – Modular can be exactly tailored to your home, lifestyle and budget.

Music and movies in up to eight rooms.

Single-source or multi-source audio & video.

Choice of simple or sophisticated remote control.

Discreet mono, stereo or 5.1 cinema surround sound.

You choose.



... Just plug your hi-fi, MP3 player, TV, home theatre system or even your PC into the wall sockets and listen to high quality sound – in any room of your home.

Unique in-ceiling amplified speakers deliver outstanding high fidelity sound, without intruding into your living space.



As simple as one touch of the discreet keypad or use the elegant and straightforward handset.

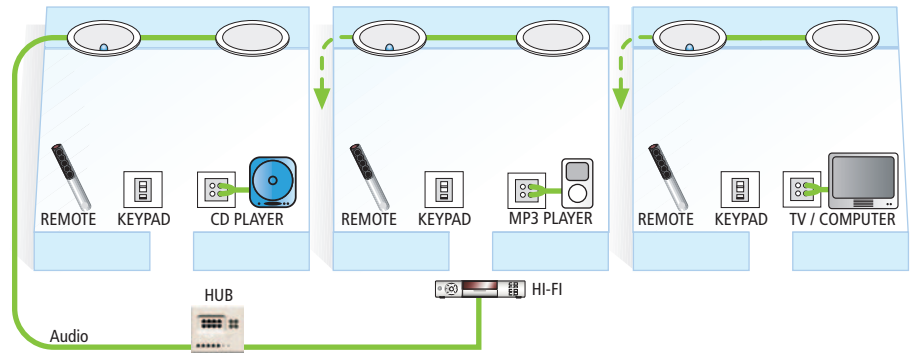
The system is wired back to a compact hub which is installed in a hidden enclosure alongside other home services e.g. electrics.

It couldn't be simpler...



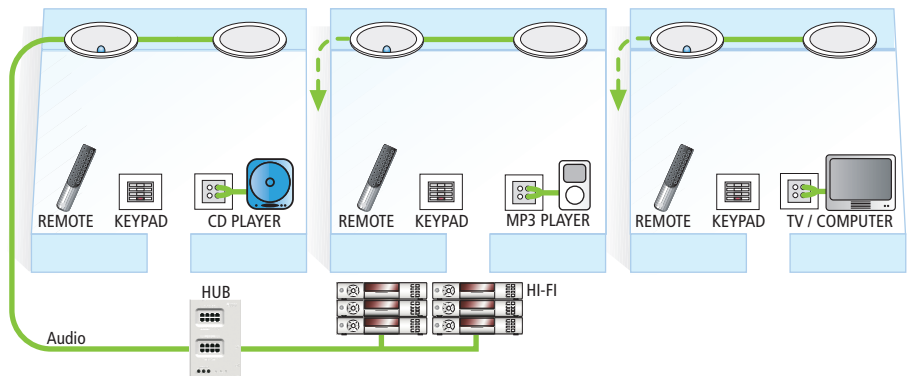
### Single-Source Music

Listen to and control the same music source (a hi-fi system) around your home. You can connect additional sources (MP3, CD or PC) in individual rooms and listen to them in glorious hi-fi stereo through the Modular speakers.



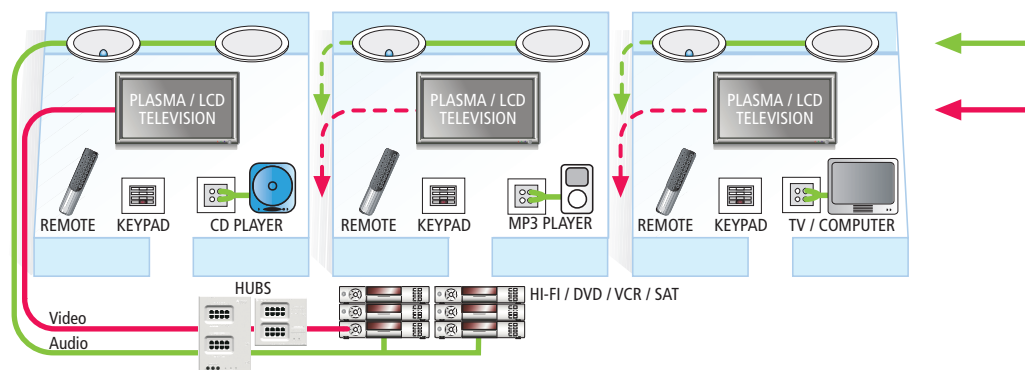
### Multi-Source Music

Listen to and control up to six different music sources around your home, for example: radio in the kitchen and CD in the bedroom etc. You can also connect additional sources (MP3, CD or PC) in individual rooms and listen to them in glorious hi-fi stereo through the Modular speakers.

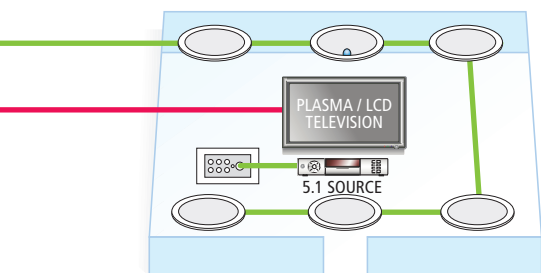


### Multi-Source Music and Video

Listen, watch and control up to six different music or video sources (i.e. CD, Radio, TV, DVD, Video and Sky) around your home. You can also connect additional sources (MP3, CD or PC) in individual rooms and listen to them in glorious hi-fi stereo through the Modular speakers.



Schematic for illustration purposes only.



### 5.1 Cinema Surround Sound

Imagine the full-on surround experience without the clutter of lots of black boxes and wires. Any room can be configured to deliver 5.1 surround sound from a suitable source.\*

\*Requires DVD player or other source with 5.1 pre-outs.

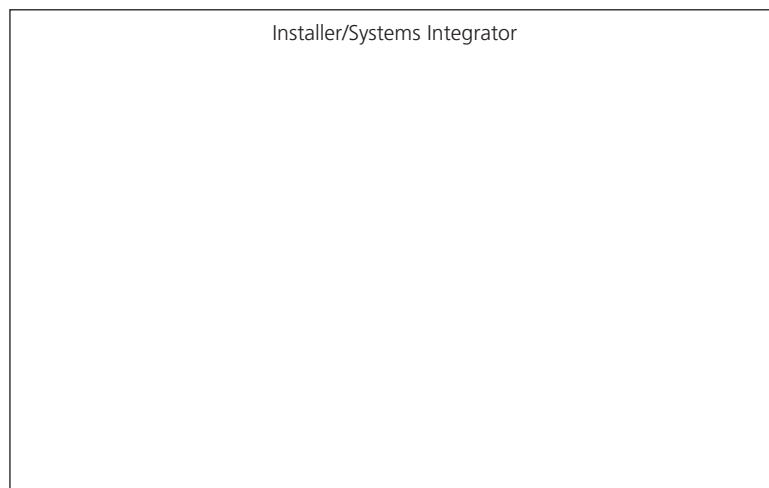


Systemline is Europe's first and leading designer/manufacturer of high quality multi-room entertainment systems for the home.

We have been manufacturing cutting edge multi-room systems since the early 1980's. Today we have 1000's of systems installed across Europe and enjoy an enviable reputation for outstanding performance and reliability.

All 'Systemline Approved Installers' have attended comprehensive training courses at our training academy and are fully qualified to help you design and perfectly install Systemline Modular into your home.

**[www.systemline.co.uk/modular](http://www.systemline.co.uk/modular)**



AHE236



Units 7 & 8, Stortford Hall Industrial Park, Bishops Stortford, Hertfordshire, CM23 5GZ United Kingdom  
Tel: +44 (0) 1279 501111 Fax: +44 (0) 1279 501080 [www.armourhe.co.uk](http://www.armourhe.co.uk) Email: [info@armourhe.co.uk](mailto:info@armourhe.co.uk)

Our policy is one of continuous product improvement, we reserve the right to change the designs and specifications without notice.  
All information is given in good faith. The manufacturer accepts no responsibility for errors, omissions or incorrect assumptions. Armour Home Electronics 2005.